



Reg #A0013634



Newsletter: June 2022

Editor: secretarywacc@gmail.com

Website: www.waccfoto.com

Facebook: www.facebook.com/WACC.Photography

VAPS Convention - Wangaratta 2022

By Sharon Alston

Finally the VAPS convention was held after being put off for so long due to Covid. It was a weekend to remember. We arrived and registered after an early start on Saturday morning. Coffee was needed to start the day.

Our Club had a number of members that attended. Some of us remained for the dinner and presentations at the Racecourse. This was a very enjoyable evening, as you can see below with Brian surrounded by his harem!

There were a number of keynote speakers including Mark Raynor, Lee Herbet, Paul Hoelen and Mieke Boynton. The knowledge, tips and tricks that we learnt will be beneficial in improving our photography.

We were inspired by some of the beautiful photography taken by these speakers. After listening to all the presentation and workshops we left with a lot more knowledge, positivity and determination to motivate us in our future photography.

The presentations, workshops and catering ran smoothly with comment being made by a number of visitors as to how well it was organised. A big thank you to VAPS and the Wangaratta Camera Club for hosting and looking after us all and providing morning teas and lunches - much appreciated by all. The event was a fantastic weekend filled with great memories.



Above: L to R Members at the VAPS Dinner - Debbie Shepherd, Jan Paatsch, Brian Paatsch, Judy Hofmeyer and Sharon Alston.

Colour Challenge June - **Green**

We are most likely surrounded by this colour after the recent rainfall. However, try to also look for the unusual!

The next colour will be Blue for July.

Entries can be made through Visual Pursuits.

Diary Dates

Next General Meeting

Monday 20th June
Venue: Boomerang
Hotel
@ 7:30pm

Committee Meeting

Monday 27th June
@ 7:30pm

July General Meeting

Monday 11th July
Venue: Boomerang
Hotel
@ 7.30pm

Paatsch Shield Challenge Day

By Brian Paatsch

On the sunny, cloudless Sunday of May 22nd, a combination of 26 members plus a few family advisers representing Benalla and Wodonga Albury Camera Clubs assembled for the annual photography challenge.

The essential 9.30 am coffee, plus jam & cream scones and a briefing of the day's guidelines were covered at the Winton Wetlands Hub cafe. Following much social chatter, members headed off in different directions in search of capturing "The Historic North East" within the given areas.

The waterless wetlands provided multiple dead trees of all shapes and sizes plus the odd white cockatoo [much to the bird photographers frustration]. Nothing like a photographer's challenge! As we approached thriving Glenrowan a wider range of historic material became evident.

We had our lunch in the delightful sun on the deck of the Vintage Hall Cafe, Glenrowan. What an ideal location for our group and the food on offer was tops. Once again more social chatter over an extended break. It was then back into snapping with a wide and varied area to select from. This included nearby historic wineries with aged buildings and machinery items and even the southern end of the Warby Ranges, whilst some moved closer to the Wangaratta area.

Some of the stayers concluded the day with a drink of whatever at the ? hotel in Wangaratta. Thanks to all involved at Benalla Club in arranging such a great day.

Now to see the image results...



Brian & Jan Paatsch - happy to model almost anywhere! Image above: by Kaye Kennedy



Images: Top and bottom left by David Skinner

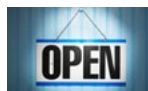


Image above: by Sharon Alston

COMPETITION PAGE

email: photocompwacc@gmail.com

web: <https://wacc.visualpursuits-au.com>



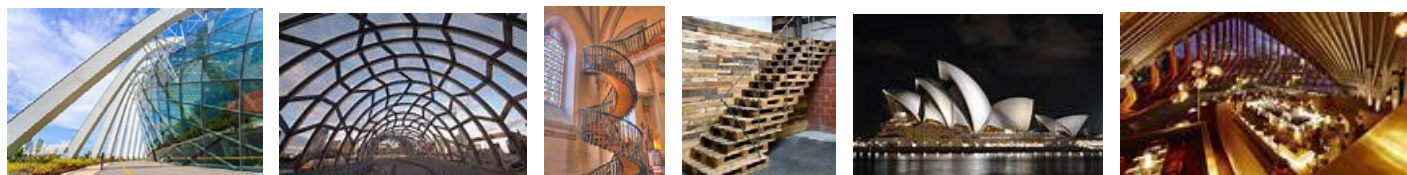
What's Coming Up

Due in June [June 20th]

Due in July [July 11th].....**Architecture**

Architectural/Built Environment photography is about buildings or structures, interior or exterior, and any part thereof; dynamic images of architecture or architectural details.

- 1. Abstract** a more 'artistic' take on architecture photography, usually featuring lines, shapes, or angles, or parts of a structure outside the context of the whole
- 2. Bridges** images of bridges, arches, piers, or other similar structures or parts thereof
- 3. Buildings** photographs featuring buildings and structures, or any aspects of a building's architectural features
- 4. Cityscapes** the physical aspects of a city or urban area
- 5. Historic** buildings or architectural sites with historic significance or value
- 6. Interiors** Interior design or aspects of buildings or structural spaces
- 7. Industrial** buildings and structures serving commerce and/or industry
- 8. Other** architectural sites and structures, or aspects thereof, which fall outside the range of the above categories



EMAIL THANK YOU

An email, part of which appears below, was recently received by our club:-

My name is Anita Gianakas and as a library media specialist up here in Maine, I wanted to thank the Wodonga Albury Camera Club for putting together your links page. Our library is hosting a special Photography workshop this summer, and I'm compiling a resource guide for the attendees. I have some student volunteers assisting me, and your page had some fantastic photography resources for us to incorporate! My students requested I send a thank-you note and let you know how much you've helped us:]

As a thank you, I wanted to pass along this flower photography guide my student, Sarah found.....<https://www.avasflowers.net/a-guide-to-flower-photography>

Warmly,

Mrs. Anita Gianakas

A printed copy of this guide will be issued to members at our July meeting. The link will also be added to our website [links page]

page submitted by comp. sec. Brian.

Photography Exhibitions & Competitions

34th Sutherland Shire National Exhibition (Digital) APS Approved

Entries close: Sunday 24th July, 2022

Catalogue available: Monday 27th September, 2022

<https://sutherlandshirenational.com>

Online Photo Competitions

<https://www.australianphotography.com/competitions>

Schnelle Exhibition

Open for members to visit during office hours

Reminder

Annual Membership Subscription due by June 30th

Payment can be made to the Treasurer Garry Pearce at the next meeting or preferably by bank transfer. Please refer to the previous email sent out for banking details and fees.

Equipment for Sale

SLR Olympus cameras - OM10 & OM2N models

Projector - ELMO FP-A 8mm

Contact - Larry Doyle email L51JD@YAHOO.COM.AU

Larry is located in Albury and could meet at a convenient time.

Equipment available for hire

Matt Cutter \$20. deposit \$5. wk.

Lens Calibration Tool

LED single light & stand (battery operated)

\$50. deposit \$10. week

Sound System

Contact : Mark Slater M 0458 058 328

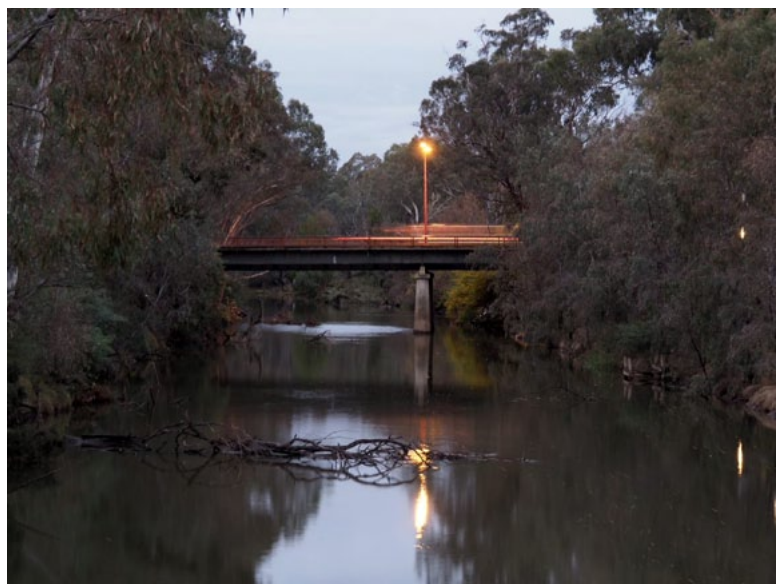


Image above: by Sharon Alston taken on the early morning workshop with Ian Rolfe at the VAPS Convention in Wangaratta (Ovens River).

Our Sponsors:

Kerry & Leighton Weymouth

